

ENGAGE TOGETHER®

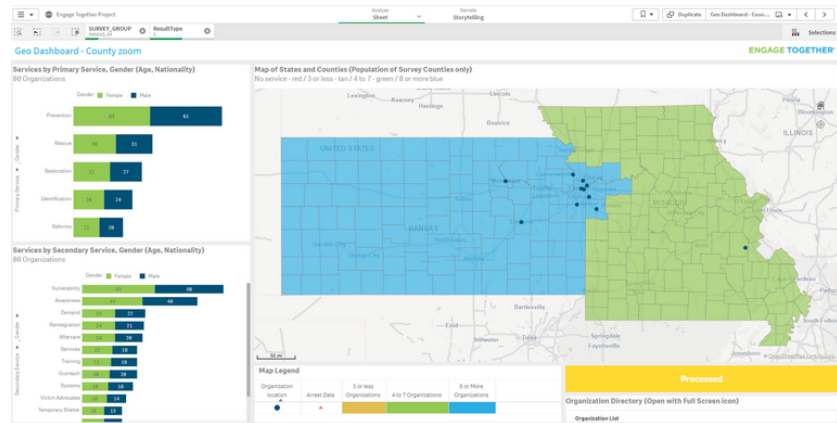
The Engage Together Project is a comprehensive, statewide, **community mapping project** that will illuminate all programs and services in your state.

Through our collaborative process and technologies, you'll gain the **data insights you need to know where efforts are strong, where gaps still exist, what needs are currently present, and how to engage the entire community** in the solution. Plus, you'll end up with a wide range of reports and dashboards, including an easily shareable **directory of all service providers** in your state.

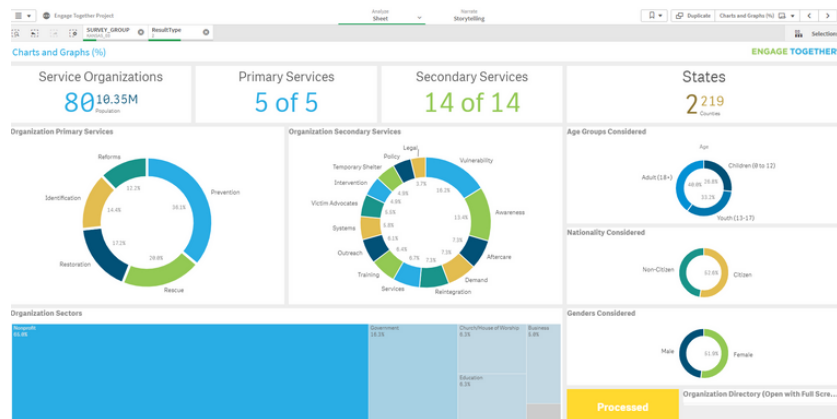
Our goal through this project is to help you **increase strategy, awareness, engagement and collaboration** in your communities, which will accelerate your work to end and prevent human trafficking - and improve care for all those impacted by it.

Learn more at engagetgether.com/project

RESOURCES BY COUNTY



STRENGTHS & GAPS



COMPREHENSIVE KPIS

